

Nganeza ya Zanele

Mukonesi: Jesse Breytenbach

Muñwali: Liz Sparg

(liñwalwa lo shandulwa kha iyi Bugu Khulu)

Themo 4 – Bugu Khulu 4



Tshivenda

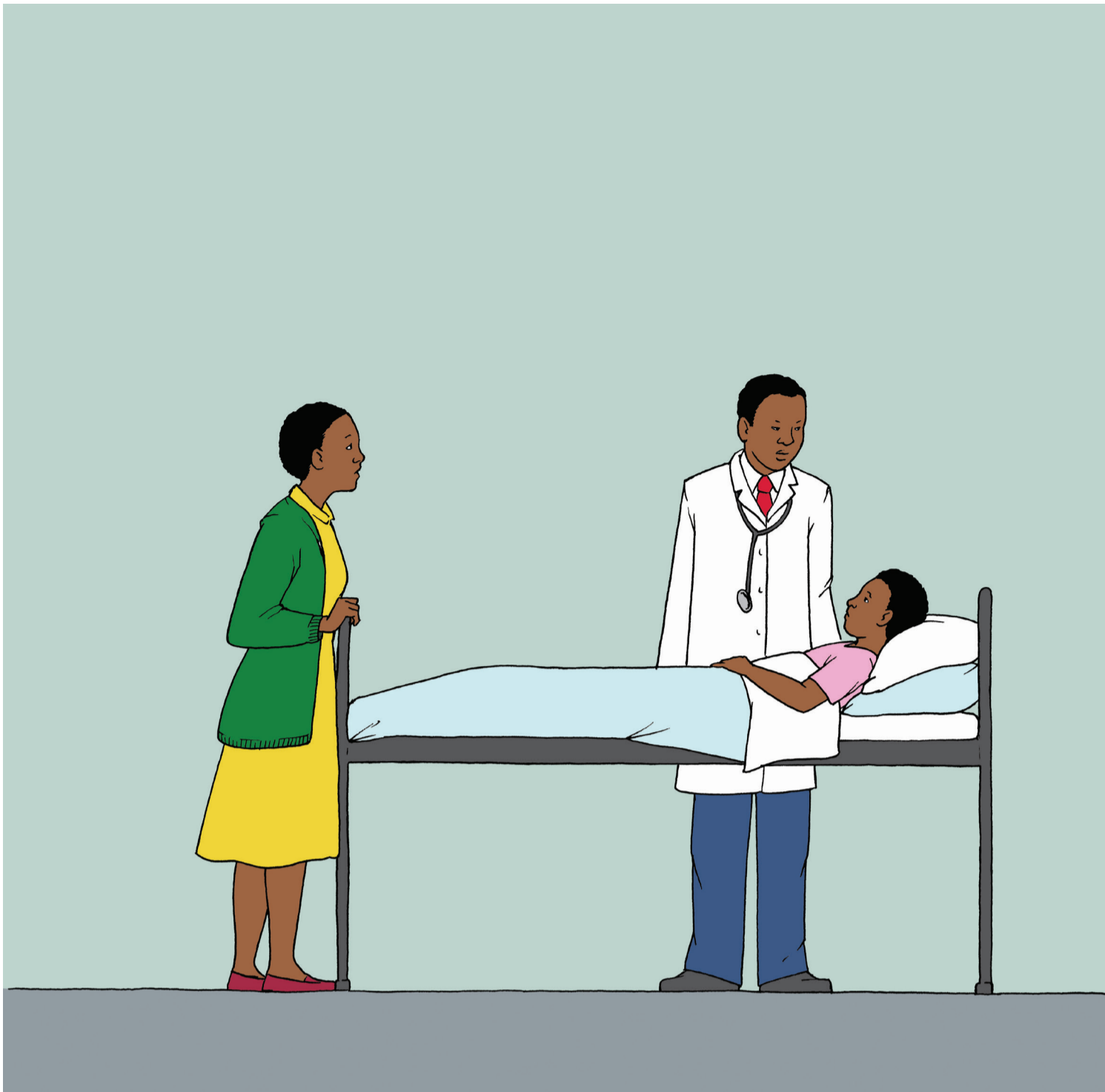


GAUTENG PROVINCE
EDUCATION
REPUBLIC OF SOUTH AFRICA

GGT 2030
GROWING GAUTENG TOGETHER

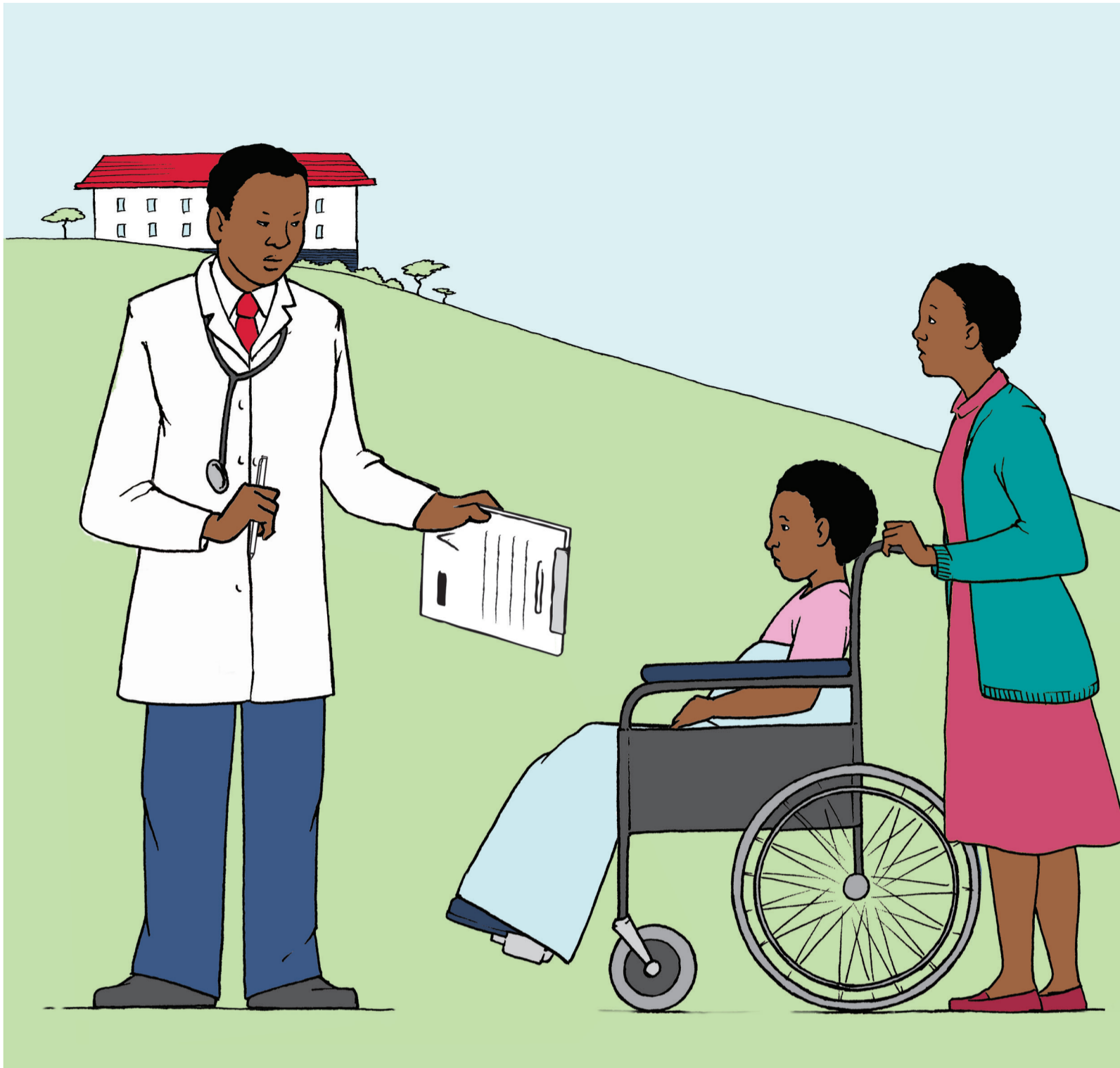


Dzina ḽanga ndi pfi Zanele
Situ nahone ndi funa u tamba
mitambo ndi tshi itela shango
ḽanga, ḽa Afurika Tshipembe.
Nganea yanga kheyi.

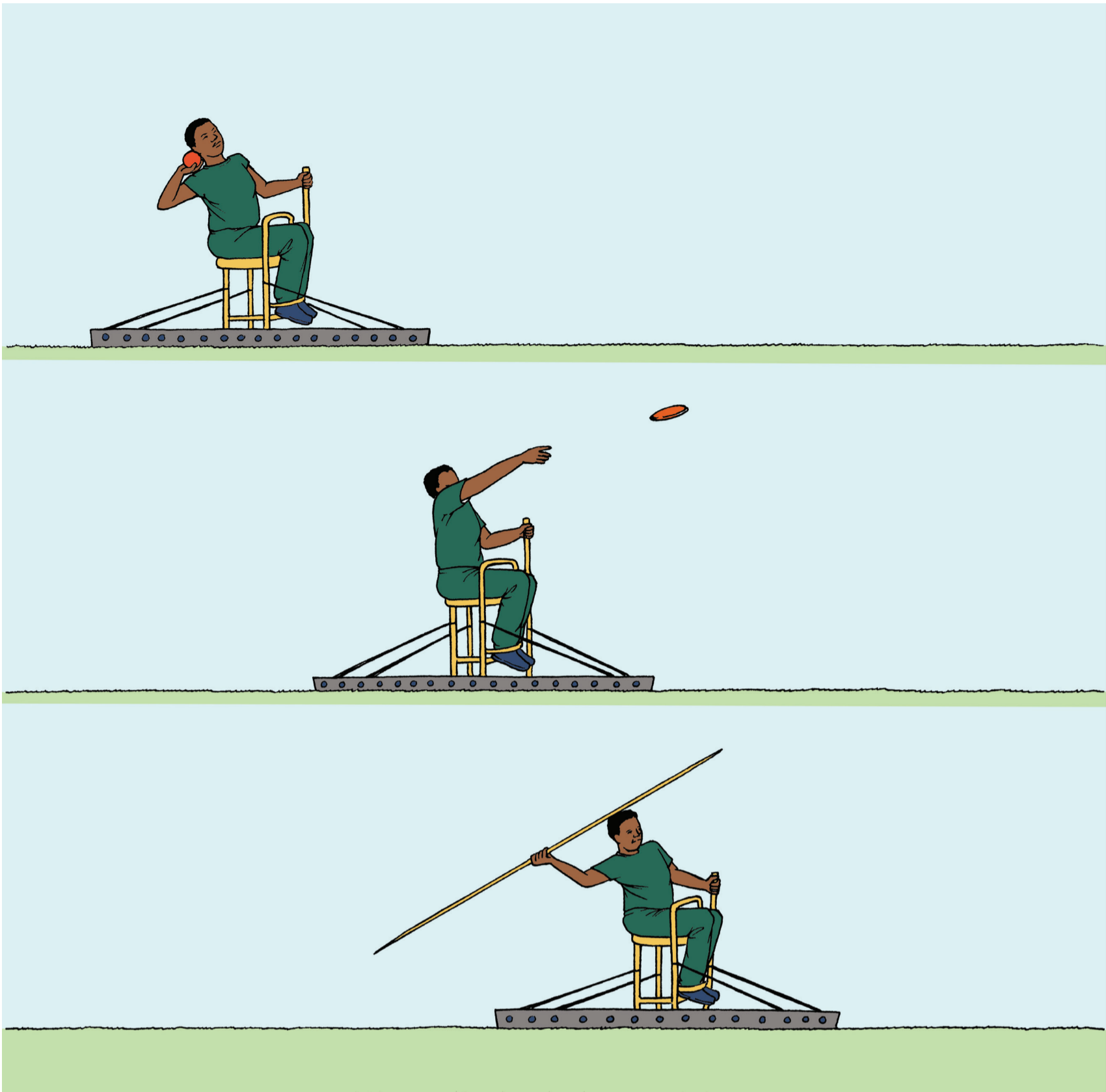


Ndo vha ndi na miṅwaha
ya fuminthihi musṱ muvhili
wanga u tshi lwala. Milenzhe
yanga yo vha i si tsha kona u
sudzuluwa nahone ndi si tsha
kona u tshimbila. Ndo mbo ḡi
ya vhuongeloni.





Madokotela o ita ndingo dzo
khetheaho. Linwe duvha vho
vhudza vhabebi vhangga uri:
“Zanele ha tsha do dovha
a tshimbila hafhu. U tea
u tshimbila a kha tshidulo
tsha malinga.”



Ndo ya kha tshikolo tsho
khetheaho. Ndo funa
mitambo nahone vhadededzi
vho ngudisa u tamba
mitambo ndi kha tshidulo
tshanga tsha malinga.

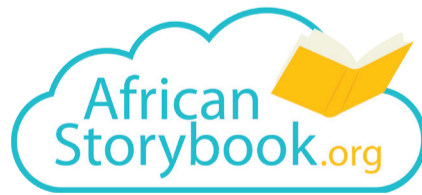
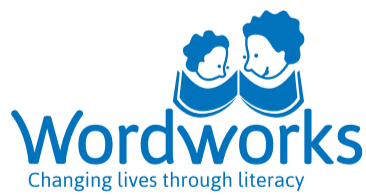


Ndo ya kha miṭaṭisano ya
mitambo nahone ndo thuba
pfufho nnzhi. Ndo vha ndi
tshi ṭoḡa uri ndi vhe wa
khwinesa u itela uri ndi kone
u ya kha Dzioḷimpiki.





Ndo ita ndowendowe ndo
difunga nahone ndo rambiwa
uri ndi ye kha Dzioḷimpiki.
Ndo pfa ndi tshi khou
dihudza musi ndo thuba
mendele wa musuku!



Iyi Bugu Khulu yo bveledzwa nga Wordworks.
Nyolo nga Jacqui Botha. Phindulelo nga Maanda Khukhusela.
Dzudzanywa nga Mpho Makwarela na Maanda Khukhusela.

Nganea yo disendeka kha bugu ya *Zanele's story*,
yo gandiswaho nga Book Dash (www.bookdash.org).

Bugu Khulu yo neshedzwa laisentsi nga fhasi ha Creative Commons Attribution 4.0 License (<http://creativecommons.org/licenses/by/4.0/>).

